

Features and Benefits

- Fastener is designed to attach steel roofing & siding used in post-frame & residential metal roofing applications.
- Threads transition from fine to coarse to generate superior holding strength in various wood substrates.
- Sharp Point & pronounced lead thread consistently drills high tensile 29 & 26 gauge steel with no “point walking.”
- Type 17 point reduces metal shavings that can embed themselves in the rubber washer.
- EPDM rubber is vulcanized to a galvanized steel washer to form an excellent seal even when driven at an angle.

SIZE	CARTON QTY.	WEIGHT/M
10 x 1"	3000	7.8
10 x 1 1/2"	2500	9.9
10 x 2"	2000	12.2
10 x 2 1/2"	1500	14.3
10 x 3"	1000	16.3
12 x 3/4" Stitch	2500	8.8

NOTES: All strength values shown below are ultimate values, expressed in LBS. Apply an appropriate safety factor to obtain design limits.

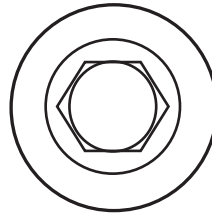
PULL OUT STRENGTH LBS. ULT.		
SUBSTRATE	PENETRATION	VALUE
3/4" PLY		707
5/8" PLY		590
1/2" PLY		400
7/16" OSB		310
2 X Y. PINE*	1"	1052
2 X Y. PINE*	FULL	1552
2 X SPF*	1"	492
2 X SPF*	FULL	1042
2 X OAK	1"	1894

* Y.PINE (Yellow Pine) * SPF (Spruce Pine Fir)

PULL OVER STRENGTH LBS. ULT.			
SUBSTRATE	GAUGE	THICKNESS	VALUE
AZ55 Galvalume	29	.015	378
AZ55 Galvalume	26	.019	629
AZ55 Galvalume	24	.024	721

FOR PROPER APPLICATION, THE USE OF IMPACT DRIVERS ARE NOT RECOMMENDED FOR POWDER COATED OR ANY WET PAINTED FASTENER

KWIKSEAL I WoodBinder®

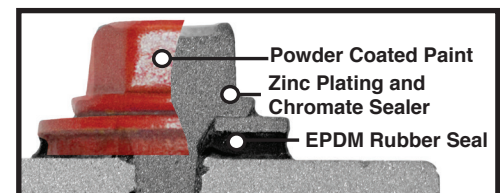


POWDER COATED

HEAD STYLE
1/4" HWH
POINT DIAMETER
30° Sharp Point Type 17
MAJOR DIAMETER
.210/.200
MINOR DIAMETER
.130/.126
BONDED WASHER DIAMETER
.472
HEAD ACROSS FLATS
.247/.244
ULT. TENSILE STRENGTH
1904 LBS.
MIN. TORSIONAL STRENGTH
60 IN-LBS.
NOM. SHEAR STRENGTH
1547 LBS.



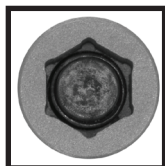
Sharp Point
Type 17



Hex Washer Head with EPDM rubber washer provides a watertight seal on roof applications. Sealrite sockets are designed to allow for the added thickness of the powder coat.



The combination of the Type 17 point & transition thread from fine to coarse generates superior drill speed in metal & holding strength in wood substrates.



ST Magnetic Sockets are available for powder coated fasteners.

APPLICATIONS

